



PROFESSIONAL TUMBLE DRYERS

PROFESSIONAL TUMBLE DRYERS

INDEX

- 1.- Product Range - Overview
- 2.- Classification
- 3.- Main Features
- 4.- Accessories and Options
- 5.- Technical data
- 6.- Sales Arguments and marketing tools

1. PRODUCT RANGE - OVERVIEW

HEAVY PROFESSIONAL DRYERS			
CONTROL TYPE	HEATING	CAPACITY	
		8 – 9 Kg	10 – 11 Kg
EASY TOUCH 2 microprocessor	Electric	DPR-8 ET2	DPR-10 ET2
SELF SERVICE EASY TOUCH 2 microprocessor	Electric	DPR-8 ET2	DPR-10 ET2
EM electronic control	Electric	DPR-8 EM	DPR-10 EM
SELF-SERVICE EM Electronic control	Electric	DPR-8 EM	DPR-10 EM



2. CLASSIFICATION

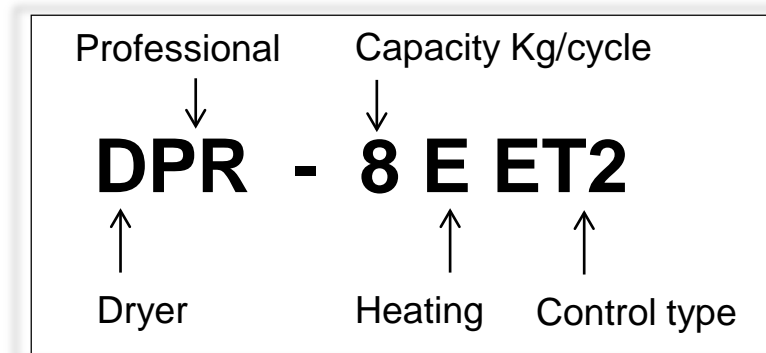
2.1 HEATING :

- **Electric (E)** – Heating elements.

Capacity: 8 and 10 kg

Self-service: Tokens, coins and central pay.

Control: **New** EASY TOUCH 2 microprocessor or EM electronic control



ONE DRYER - 2 POSSIBLE USES

ON PREMISE LAUNDRY



SELF-SERVICE LAUNDRY

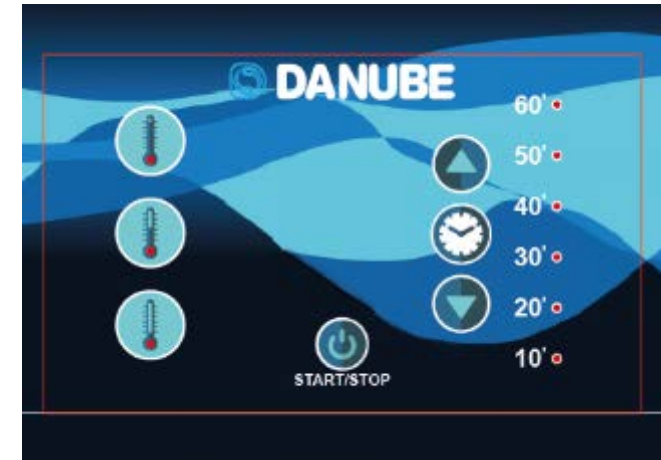


3. MAIN FEATURES

3.1.- CONTROL

EM ELECTRONIC CONTROL

- Push buttons to control temperature (Low, Medium, High) and time (minutes)
- No programs or possibility to include CARE DRY (humidity control) nor SPRINKLERS (fire extinguishing system),
- Simple, user-friendly and economic.
- Programmable with external console (Optional)



3. MAIN FEATURES

3.1.- CONTROL

EASY TOUCH 2 MICROPROCESSOR

- Touch screen 4,3"
- User Friendly / Easy and intuitive to use
- 37 available languages
- Fully programable: **20** pre-set programs, can be modified during execution, and possibility of creating, exporting, importing multiple new programs or phases (USB).



3. MAIN FEATURES

3.2.- BIG ROBUST DOOR MADE IN ALUMINUM

- Easy loading
- Biggest diameter on the market for such equipment



552 mm

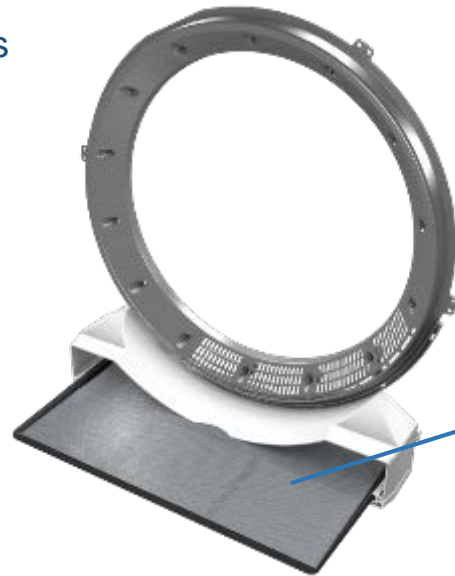
3. MAIN FEATURES

3.3. – DRAWER AS FLUFF FILTER

All models offer new bigger fluff filter.
(not in the door)

ADVANTAGES

- Increased drying efficiency
- Easy to clean – ergonomics



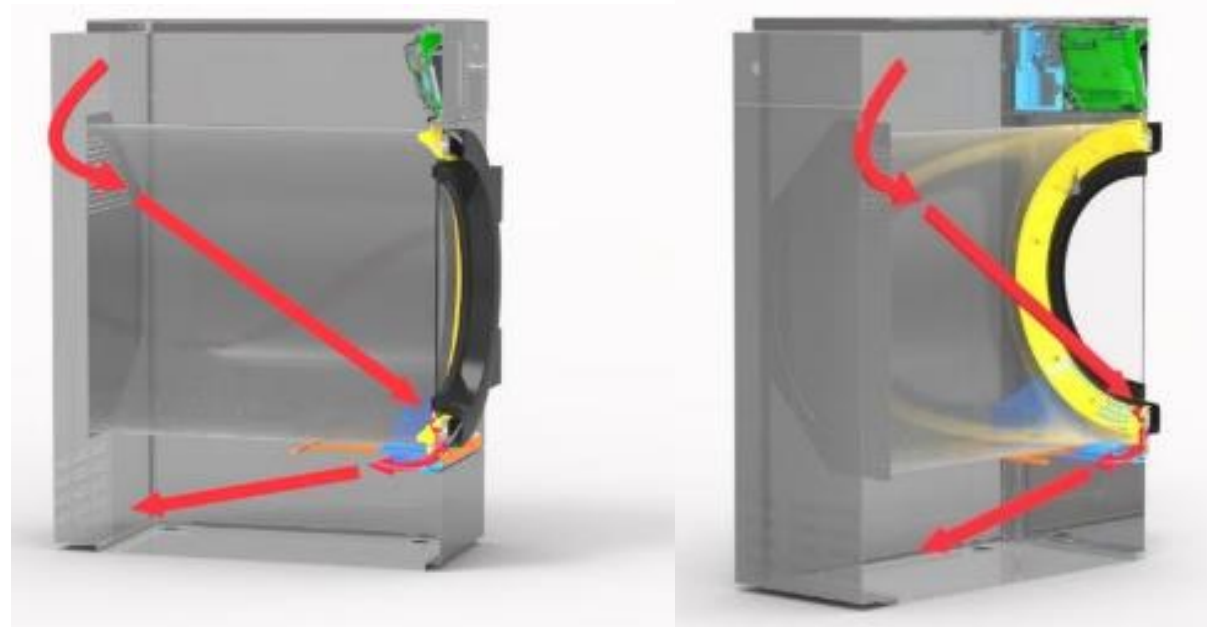
3. MAIN FEATURES

3.4.- IMPROVED AIR FLOW SYSTEM – Industrial fan

Axial airflow which increases the efficiency of the whole drying process due to the improvement of the airflow inside the drum.

ADVANTAGES

- ✓ Increased drying efficiency



3. MAIN FEATURES

3.5. – OUTER CASING

Panels in grey skinplate, stainless steel look.

ADVANTAGES

- Elegant look
- Stamped front and sides panels
- No fingerprints



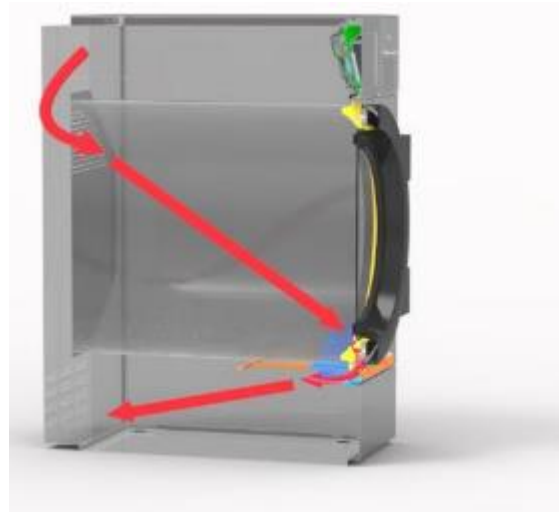
3. MAIN FEATURES

3.6.- GALVANIZED DRUM

Drum of the dryers built in galvanized (AISI-430 stainless steel drum as option).

3.7.- AXIAL AIRFLOW

Axial airflow which increases the efficiency of the whole drying process due to the improvement of the airflow inside the drum.



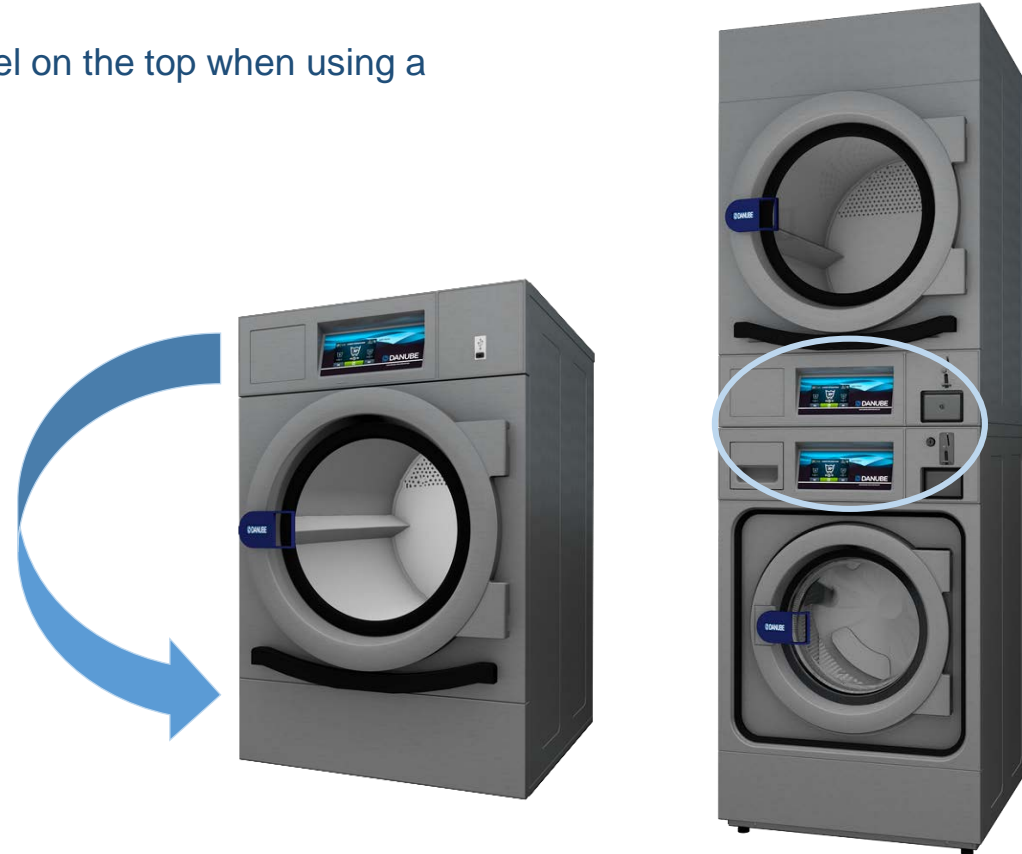
3. MAIN FEATURES

3.8. – REVERSIBLE PANEL FOR SINGLE OR STACKED DRYERS

Control panel can be assembled in a lower side and lower panel on the top when using a dryer stacked with a washer.

ADVANTAGES

- ✓ Better ergonomics.
- ✓ Versatile



3. MAIN FEATURES

3.9.- STACKABLE WASHER AND DRYER

Easily stackable washer and dryer for OPL and COIN.

- Washer + dryer
- Dryer + dryer



OPL



Coin

3. MAIN FEATURES

3.10.- USB PORT

- Possibility of programming, exporting, importing (**USB**) new programs.



3. MAIN FEATURES

3.11. – CERTIFICATES

- CE approved
- USA and Canada approved



3.12. – VOLTAGES

- Models are 230V single phase (most versatile)
- Also Models are supplied in 110 V. Optional
- 50 or 60 Hz model to be ordered

4. ACCESSORIES AND OPTIONS

OPTIONS

4.1- Reversible door

- ✓ Allow to adjust the opening sense as required



4.2- Stainless steel AISI-304 body and front

4.3- Ergonomics base

- ✓ Makes easier the loading and unloading

4.4- AISI 430 Stainless steel drum



4. ACCESSORIES AND OPTIONS

OPTIONS

4.5- CARE DRY – INTELLIGENT MOISTURE CONTROL (ET2 models only)

Very accurate and economical humidity sensor.

Drying cycle stop when it reaches the set level of residual moisture.

Automatically adapts drum spinning speed to the humidity level of the load, ensuring maximum humidity extraction.

- ✓ Kinder treatment of garments
- ✓ Energy saving
- ✓ Reduced Drying Time

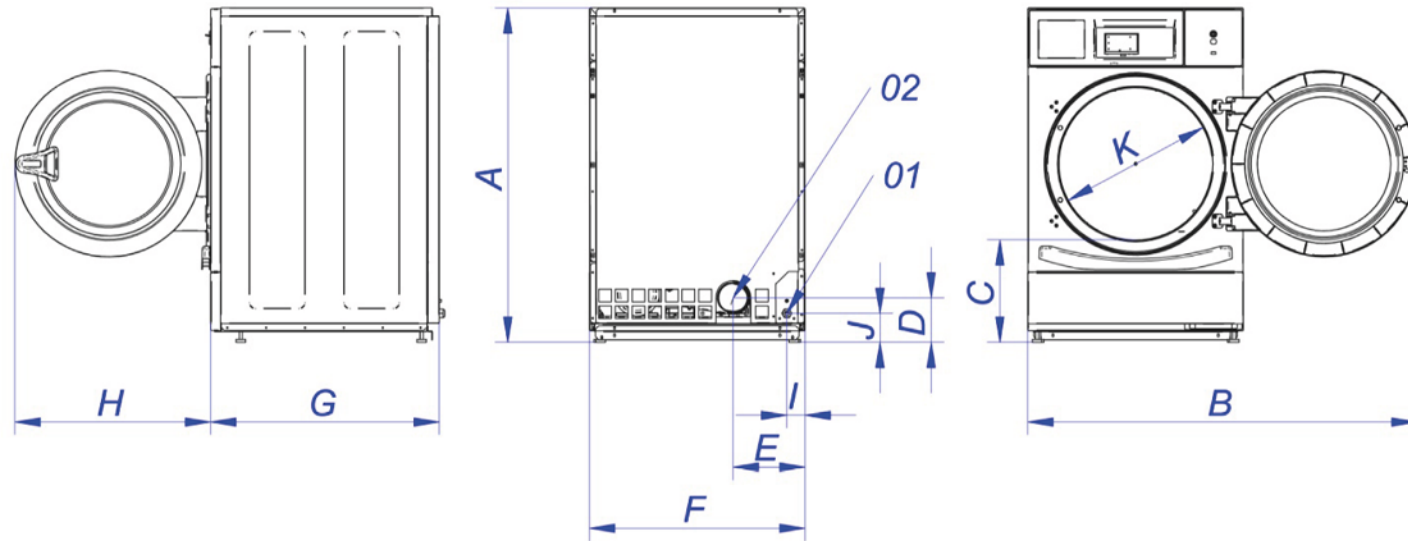
4.6- Communication kit **Danube Online** (ET2 models only)

- ✓ **WIFI or ETHERNET module.**

Wireless communication with washer for management (input / output data)



TECHNICAL DATA	UNIT.	DPR 8	DPR 10
DRUM			
Capacity 1:18 / 1:20	Kg	8,9 / 8	11,1 / 10
Volume (litres)	l	160	200
Diameter	mm	590	590
Depth	mm	585	690
Hourly output	kg/h	9,8	11,2
Evaporation capacity	l/h	4,65	6,35
DOOR			
Loading height (door center)	mm	554	554
Loading height (door bottom)	mm	250	250
Diameter	mm	588	588
GENERAL DATA			
ET2 TOUCH CONTROL	-	Touch screen 4,3"	Touch screen 4,3"
USB Connection	-	Yes	Yes
Construction	-	Skinplate panels	skinplate panels
Plinth	-	OPT	OPT
Self-service version	-	Yes	Yes
Niveau sonore	db	62	62
POWER			
Motor	kW	0,37	0,37
Electric heating	kW	4,5	6,75
Tension 230V I +N +T	Nº x mm2 / A	3 x 10 / 40A	3 x 10 / 40A
Tension 230V - III + T	Nº x mm2 / A	4 x 4 / 25A	4 x 4 / 25A
Tension 400V - III + N + T	Nº x mm2 / A	5 x 2,5 / 16A	5 x 2,5 / 16A
CONNECTIONS			
∅ Exhaust	mm	100	100
Airflow	m3/h	300	300
DIMENSIONS / DIMENSIONS WITH PACKING			
Length	mm	680 / 710	680 / 710
Depth	mm	722 / 832	775 / 832
Height	mm	1.056 / 1.141	1.056 / 1.141
Net weight / gross weight	kg	89 / 100,5	92,6 / 104,1



01. Electrical connection
02. Exhaust outlet \varnothing 100

	A	B	C	D	E	F	G	H	I	J	K
DPR-8	1.056	1.227	320	140	226	680	722	615	57	91	480
DPR-10	1.056	1.227	320	140	226	680	775	615	57	91	480

6. SALES ARGUMENTS



6. SALES ARGUMENTS

**FEATURES**

- ✓ User friendly and totally programmable **EASY TOUCH 2**
- ✓ **USB Connection** . PC software free of charge for programming, traceability, data analyses....
- ✓ **Remote communication ready / Multi-payable systems**
- ✓ Heating power up to 6,75 kw - **Reduced drying cycles**
- ✓ **Configurable** Heating power **from 4,5 to 6,75 kw** (for low power installations)
- ✓ **Optional**
 - WIFI connection
 - Advertisements shown on display
 - Ship Voltage ...

6. SALES ARGUMENTS

- ✓ **Robust door made in Aluminum**
- ✓ **Higher airflow m3/h and big air pressure**
- ✓ **Big surface and more robust fluff filter as drawer**
- ✓ **More robust frame construction**
- ✓ **Powerful industrial fan**
- ✓ **Optional:**
 - **Stainless steel AISI-304 panels**

ROBUSTNESS



6. SALES ARGUMENTS



VERSATILITY

- ✓ **OPL ↔ COIN.** Standard model easily transformable
- ✓ **SINGLE ↔ STACKED.** Standard model easily stackable with a washer or another dryer
- ✓ **Reversible control panel**
- ✓ **Suitable for many sectors:**
 - Restaurants
 - Gyms
 - Camping
 - Mop Cleaning
 - Kinder Gardens...



6. SALES ARGUMENTS

- ✓ **Improved air flow system,**
- ✓ **Big fluff filter – Better air efficiency,**
- ✓ **Humidity control:** CARE DRY in ET2 control models,
- ✓ Efficient driven design and construction.

EFFICIENCY



6.2.- COMPARISONS Vs. COMPETITORS

HOME APPLIANCE



ASKO



LG



ELECTROLUX



SPEED-QUEEN

PROFESSIONAL DRYERS



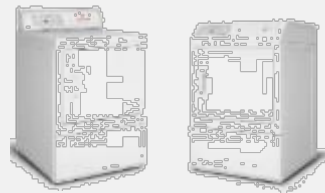
ASKO



LG



ELECTROLUX



SPEED-QUEEN

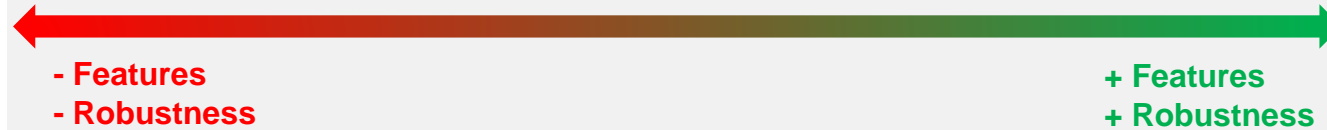


DANUBE

INDUSTRIAL DRYER



DANUBE



ROBUSTNESS					
MATERIALS	ASKO	LG	ELECTROLUX	SPEEDQUEEN	DANUBE
External panels	Painted	Painted	Painted	Painted	Skinplate
Door	Squared blind	Plastic	Plastic	Squared blind	Aluminum
Drum				Galvanized	Galvanized
Ribs	Plastic	Plastic	Plastic	Plastic	Galvanized

6.2.- COMPARISONS Vs. COMPETITORS

HOME APPLIANCE



ASKO



LG



ELECTROLUX



SPEED-QUEEN

PROFESSIONAL DRYERS



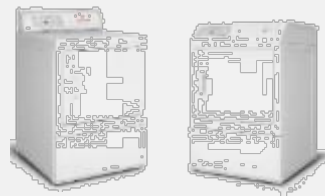
ASKO



LG



ELECTROLUX



SPEED-QUEEN

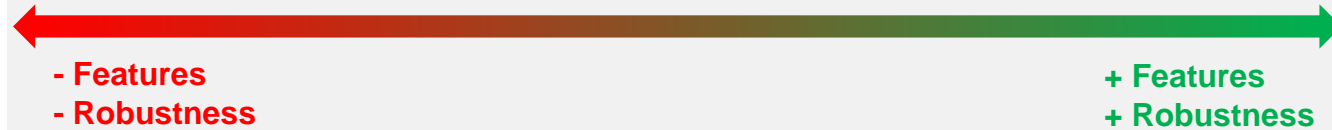


DANUBE

INDUSTRIAL DRYER



DANUBE



FEATURES					
FEATURES	ASKO	LG	ELECTROLUX	SPEEDQUEEN	DANUBE
Control type	Elec. Simple	Elec. Simple	Elec. Simple	Elec. Simple	Touch (4,3")
Programmable	No	No	No	No	Standard
USB port	No	No	No	No	Standard

6. SALES ARGUMENTS



DANUBE INTERNATIONAL

Parc d'Activités de Sologne - BP 19 - 41600 Lamotte-Beuvron - FRANCE

Tél.: +33 (0)2 54 88 05 76

Fax: +33 (0)2 54 96 89 04

Support technique: +33 (0)2 54 88 83 22 – support@danube.fr

SAV Pièces: +33 (0)2 54 88 83 65 – Parts@danube.fr

info@danube-international.com

www.danube-international.com - www.danube.fr